



SDW Back Office Software Solution

Advanced Management Features to Meet Your Growing Business Needs.

Increase the functionality of your Sharp electronic cash register or point-of-sale system with SDW Back Office Management Software. This management software provides advanced features your business needs to operate efficiently and stay competitive. With an interface designed to provide access to vital retail statistics, detailed reporting and polling features, its easy for managers and business owners to monitor store operations. Intuitive and user-friendly, Sharp's SDW Back Office provides information you need to keep your business growing and on the right track.



Versatility for Today's Fact-Paced Businesses.

Connect multiple POS terminals at one location or link several business locations together for advanced communications and use SDW Back Office to manage. Perform central program maintenance such as PLU's, departments, text, condiment tables, combo meals, keyboard data, employees, promotions and much more...all from a PC. Easily upload to your POS, save time and increase efficiency.

The SDW software provides advanced polling, reporting and programming from the convenience of a Microsoft® Windows® PC.

Based on industry standard Sybase® Data Architecture, SDW Back Office is a reliable application, easy to use drop down menus and customizable shortcuts for re-occurring operations make SDW Back Office easy to use.

Extensive, back-office functionality

The powerful SDW Back Office Software offers: A comprehensive base package or expand the capabilities with a variety of module features:

Comprehensive polling package

- Receive, change programming settings and send it back to the register
- Receive, evaluate and print sales data reports

Scheduler for automated operations

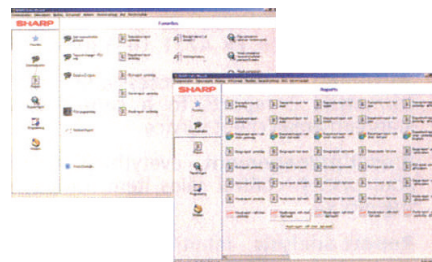
- Report retrieval
- Program change sending
- Data export /import

Historical Reporting

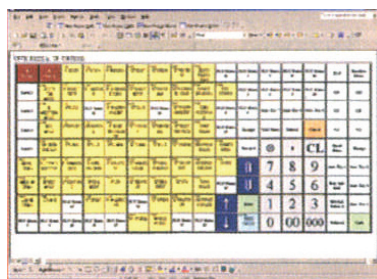
- Selections include Date Range
- Last Week, Last Month, Last Year, etc.

Sharp models supporting SDW Back Office

- ER-A410
- ER-A420
- ER-A450T
- ER-A520
- ER-A530
- UP-X300
- UP-600
- UP-700
- ER-A770
- ER-A771
- UP-3500
- UP-800 Series



Graphical user interface for easy operation.



Enjoy the convenience of creating professional key sheets (Microsoft® Word required).

Journal report Developing evaluation						
Multiple cash registers						
Interval	Number of receipts	Voided	Zero sums	No sale	Discounts	Amount
08:00 - 08:29	1					2.28
08:30 - 08:59	1					7.28
07:00 - 07:29	12	2	1			41.65
07:30 - 07:59	142					245.88
08:00 - 08:29	178	7				551.71
08:30 - 08:59	252	9	1			755.84
09:00 - 09:29	281	7		1	2	853.05
09:30 - 09:59	282	11				785.54
10:00 - 10:29	223	13	2			687.52
10:30 - 10:59	257	7				768.61
11:00 - 11:29	55	1				186.05
11:30 - 11:59	55	3	1			157.85
12:00 - 12:29	28	2				119.22
12:30 - 12:59	36	2				86.27
13:00 - 13:29	20	3				74.23
13:30 - 13:59	21					86.40
14:00 - 14:29	21	3				71.65
14:30 - 14:59	28	1				126.05
15:00 - 15:29	24	1				113.05
15:30 - 15:59	25	6	3			83.85
16:00 - 16:29	14	1				53.41
16:30 - 16:59	6	1		1		37.81
17:00 - 17:29	1					
17:30 - 17:59	1			1		
18:00 - 18:59	1					

Use numeric reporting tables to view register data.



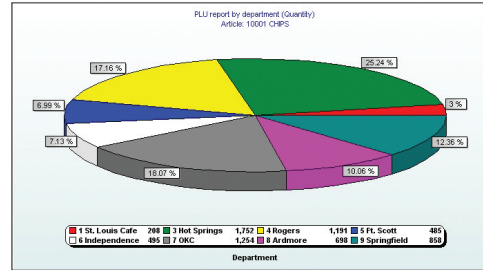
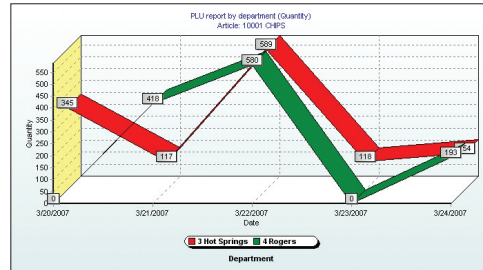
PC System Requirements

Microsoft® Windows® 2000, XP® or VISTA® operating system; Processor (1 GHz CPU or higher)-Intel® Pentium® or above, AMD® Athlon®; Memory: 128MB or greater; Video: 800 x 600, or higher; minimum available disk space 2GB

Standard Functions

The following standard functions are part of the SDW software:

- **Graphical user interface:** Customize the look and feel of favorites and shortcuts to enhance user friendliness
- **Automatic Scheduling:** Configurable based on user requirements to facilitate communications and printed reports automatically
- **Central ports management:** Connectivity through RS232 direct cable, modem or Ethernet LAN using the TCP/IP protocol (for models with network communications capabilities only)
- **Automail:** Deliver html and/or CSV formatted Z reports to virtually anywhere using a standard email client service (requires ASCII I/E module)
- **Preset management:** Define your system programming and sales items at a click of the mouse
- **Report analysis:** Flexible or defined report period selections and fiscal rebooking controls help keep data accurate and relevant



With the SDW optional Report Agent Module (shown above), create graphical presentations of trends and deliver essential information by selecting report types and defining polling times.

Basic Modules

Small Business without in-line support

Model UPSDWSBU

Supported ECRs and POS systems:

- ER-A410
- ER-A420
- ER-A450T
- ER-A520
- ER-A530

Business with in-line support

Model UPSDWBM1

Supported ECRs and POS systems:

- ER-A410
- ER-A420
- ER-A450T
- ER-A520
- ER-A530
- UP-X300
- UP-600
- UP-700
- ER-A770
- ER-A771
- UP-3300
- UP-3301
- UP-3500
- UP-800 Series

The Sharp ECR or POS may connect to a PC via its RS-232C serial interface through a direct connection or a modem, or via an Ethernet network (compatible models only) using the TCP/IP protocol, Ethernet hub, and Ethernet.

Optional Modules

SDW Back office may be expanded with optional modules:

ASCII Import/Export

Model UPSDWASC

Add the Ability to share data with other PC systems using the definable export options. Export programming data, make changes elsewhere and import the new file using the helpful Import Assistant.

Host Client Network

Model UPSDWNET

Centralize head office manage data – creates workgroup environment accessible by more people within the same office.

Report Agent

Model UPSSDRP1

Present graphical analysis based on defined profiles and archive for trend analysis.

- Report Agent 1-5: Model UPSDWRP1
- Report Agent 6-10: Model UPSDWRP2
- Report Agent 11+: (unlimited) Model UPSDWRP3

Bar Code Printing

Model UPSSDWBCD

Easily print bar codes using RS-232 DB9 serial interfaces. Compatible with standard printer and Sharp MFP products.

Receipt Viewer (TLog models only)

Model UPSDWRVW

Filter, find and view a representation of the actual receipt from the original time of sale. Aids in loss prevention.

Stock Keeping

Model UPSDWSTK

Control costly inventory overhead by building data profiles and analyzing inventory transactions and status.

Password Authority

Model UPSDWPAS

Provide access to essential information to authorized personnel while controlling access for others; includes 99 levels of authority covering every SDW function.

Key Sheet Printing*

Model UPSDWKEY

Create professional key sheets using Microsoft Word®; reduce costs and increase convenience and flexibility when making menu changes.

*Requires Microsoft Word 2000® or later

Enterprise / Location Control

Additional Outlet / Branch (2-5)

Model UPSDWOL1

Additional Outlet / Branch (6+)

Model UPSDWOL2

Note: The above modules are dedicated interfaces which require usage of the UPSDWSBU or UPSDWBM1 products.