



Table Service Restaurants / Bars / Nightclubs



Quick Service Restaurants / Ice Cream Parlors



Pizza



Delivery

## NCC Reflection POS Embedded POS Touch Screen Terminal



### Powered With Intel Atom Dual-Core Processor To Run More Demanding Applications

NCC Reflection POS is powered by the most feature-rich software of any product in its class. This system is designed for a wide variety of restaurant concepts including Quick Service, Casual Dining, Fine Dining, Pizza Delivery, Bars and Nightclubs. Reflection POS has the functionality to meet the demands of most restaurant operations and features an embedded operating system that eliminates the risk of software viruses and spyware.

- 15" LCD with 5-Wire Resistive Touch
- Intel® Atom™ Dual Core 1.8GHz Processor
- Self-Healing, Fully Data-Redundant Network
- Integrated Credit Card / PIN Debit / Gift Card Processing
- Easily Wall Mountable
- Excellent Cable Management



DUAL CORE

RoHS COMPLIANT

NO Windows

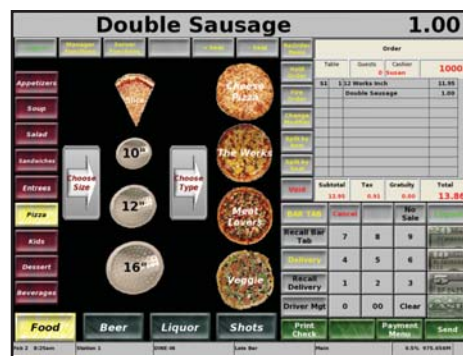
NO HDD

NO Spyware

NO Headache



Customized graphical table maps.



Graphic screens guide operators with minimal training.

## NCC Reflection POS Embedded

NCC Reflection POS is the most feature-rich software of any product in its class. This system is designed for a wide variety of restaurant concepts including casual dining, fine dining, pizza delivery, bars and nightclubs. Reflection POS has the functionality to meet the demands of any restaurant operation and features an embedded operating system that eliminates the risk of software viruses and spyware. You can rest assured that Reflection POS will be ready to perform when you need it. NCC Reflection POS has the features necessary to effectively and efficiently run restaurants from the small quick service concept up to the large full service table service establishments. Flexibility and reliability are two key aspects of the NCC Reflection POS solution that makes it suitable in a variety of different foodservice concepts.

### No Single Point of Failure

NCC Reflection POS is equipped with the most sophisticated, terminal-redundant network on the market. Using the integrated high-speed Ethernet, all system information is replicated on every terminal across the TCP/IP network. If a terminal is removed from the LAN, all information is automatically synchronized when the terminal re-enters the network.

### Quick Service

NCC Reflection POS is equipped to handle all sizes of quick service operations. It possesses all operational and management functionality that are key to running an efficient QSR operation.

- Auto-Meal Combination Recognition
- Coin Changer Support
- Kitchen Video Support
- Assign Customer Phone Number for To-Go Orders
- Dual Drive-Thru Modes
- Drive-Thru Order Confirmation Board Support
- Inventory Control Including Recipes and Cost Analysis
- Order Confirmation Board and Coin Changer Interfaces

### Table Service

NCC Reflection POS can be easily designed to allow for the various styles of restaurant concepts. From the start of the order process, the various transitions that a guest check can be subjected to are handled quickly and efficiently. Whether in a cashier style operation or full service using a banked wait staff concept, NCC Reflection POS has all of the necessary management control and report tracking to provide an accurate view of the days business.

- Table and Retained Check Tracking
- Graphical Table Map
- Integrated Credit Authorization Option
- Server Banking and Cashier Operations
- Auto Gratuity
- Inclusive Tax Items
- Liquor Dispenser Support
- Assign Names to Bar Tabs
- Priority Sorting for Kitchen Printers
- Custom Kitchen Messages
- Separate Check Functionality by Item, Seat, or Dollar Amount
- Split an Item Up to 9 Ways
- Combine Check Function
- Server Transfer, One or All Checks
- Check Recall By Bar Code Scanner

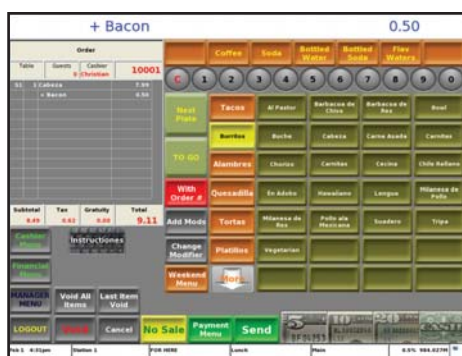
### Online Ordering and Delivery Operations

The NCC Reflection POS delivery module will allow guest checks to be created and assigned to customers for delivery. NCC Reflection POS can maintain a customer file of 9,999 entries which can be accessed and sorted by customer ID number, phone number, address, first and last name or by city. NCC Reflection POS can create and store new customers on the fly during a first time purchase. When used with PC WorkStation NCC Reflection, POS can automatically retrieve order history allowing for fast and accurate order entry. Guest checks created for delivery are managed by the driver dispatch functions where accountability for delivery orders are assigned to drivers.

- 9,999 Customer File
- Sort By ID, Phone, Address, First and Last Name or By City
- Automatically Searches By Sort Option
- Create New Customers On the Fly
- Delivery Notes for Each Customer
- Retrieve Order History (Requires PC Workstation)
- Fast and Accurate Order Entry
- Select All Items or Tag Item to Current Check



# SPT-4500 NCC Reflection POS Embedded POS Terminal



Menu items, condiments, flavors, instructions and options can be placed upon one key. When an item is registered, a specific key displays the options available for the item. You can control how many choices can be made as well as what options display next.

- Personalized Service
- Assign Delivery Order to Available Drivers
- Displays a List of Employees Clock In with Job Code "Driver"
- Displays Assigned Checks
- Dispatch Drivers
- Displays Status of Drivers (Ready or En Route)
- Arrange Tickets for Desired Delivery Route
- Checks Totals Posted to Driver for Accountability

## Programming

With NCC Reflection POS, no back office PC is required to make changes or additions to the system tables. All menu item, employee, screen design, etc., changes may be performed directly on the POS terminal in an easy to use programming mode using an on screen touch keyboard. Changes are accomplished easily and are immediately available to all stations in the POS system.

## Extensive Reporting

NCC Reflection POS has a wide range of real time reports. Reports can be obtained locally at each station or on the back room PC if equipped with the optional PC Workstation software. Report data can also be exported and communicated via FTP push or poll methods for use with other reporting solutions. Detailed information can be obtained by station, system, revenue center, user and many more.

## Inventory

An integrated inventory system accurately tracks product and ingredient usage by way of recipe definitions and product mix information. Item count down feature can signal the wait staff that a particular product is no longer available, while inventory reports provide usage details and food cost information.

## Built in Time Clock

Using the available time clock feature, NCC Reflection POS will help managers capture the valuable information necessary to control labor costs. Employee clock in/out procedures can either be performed by numeric entry, magnetic card or digital I-Button. Security levels assigned by job codes provide the controls necessary to access POS functions. Detailed time clock reports will provide employee punch time data with accumulated pay period totals, as well as additional reports to provide critical labor to sales information.



# SPT-4500 NCC Reflection POS Embedded POS Terminal



Optional Integrated VFD Customer Display



Optional WiFi Module



The SPT-4500's Sturdy Base is Easily Removed and Replaced with a VESA Wall Mount Bracket



Tool-Free Access to the Hard Disk Drive

## System Features

- Intel® Atom™ Dual-Core 1.8GHz Processor
- 15" TFT LCD with 5-Wire Resistive Touch
- Wall Mountable
- Optional Integrated Customer Display
- Excellent Cable Management
- Self-Healing, Fully Data-Redundant Network
- Online Ordering Option
- Delivery
- Graphical Table Management
- Bar Tabs with Credit Pre-Authorization
- Time of Day / Day of Week Pricing
- Food and Drink Prep Instructions
- Beverage Enforcement
- Split Item / Split Check / Combine Checks
- Recall Guest Checks Using Barcode Scanner
- Item Countdown with Automatic 86
- Dual Drive-Thru Support with Order Board Display
- Automatic Combo Recognition
- Integrated Labor Scheduling and Payroll
- Available Loyalty Module
- Remote Kitchen Printers and Videos
- Product Scanning
- Ounce/Pound Scale Interface
- Food Stamp Sorting and Tendering
- Age Verification
- End-of-Day Data Sent to Corporate FTP Site

## Applications

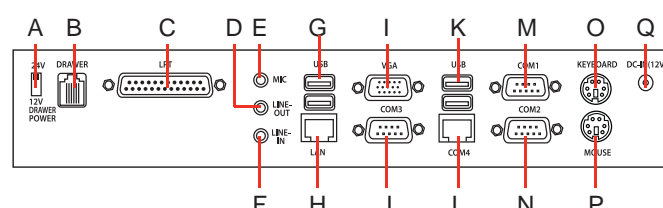
- Table Service
- Fast Casual
- Quick Service
- Concessions
- Cafeterias
- Ice Cream / Yogurt
- Coffee Shops
- Bars
- Nightclubs
- Pizza

## Connectivity

- A** Drawer Voltage Selector Switch
- B** Cash Drawer
- C** Parallel
- D** Line-Out
- E** Mic-In
- F** Line-In
- G** USB (2)
- H** LAN
- I** VGA
- J** COM3 (Powered)
- K** USB (2)
- L** COM4 (Powered)
- M** COM1 (Powered)
- N** COM2 (Powered)
- O** Keyboard
- P** Mouse
- Q** DC In (Power)

## Hardware Specifications

<b>Processor:</b>	Intel Atom D525 1.8GHz (Dual Core)
<b>FSB:</b>	800 MHz
<b>Socket Type:</b>	BGA
<b>Display LCD:</b>	15" LCD
<b>Resolution:</b>	1024 x 768
<b>Brightness:</b>	Adjustable Up to 250 cd/m2
<b>Integrated Speakers:</b>	Integrated 2 Watt Speakers
<b>Chipset:</b>	ICH8M
<b>Touch Panel:</b>	5-Wire Resistive Touch
<b>MCR:</b>	Integrated USB Interface Triple Track MCR
<b>RAM Memory:</b>	DDR3 800 SODIMM 2GB Expandable To 4GB (2 Slots)
<b>Video Memory:</b>	Shared Memory Up To 256MB For Primary LCD
<b>Compact Flash Disk:</b>	Type II Compact Flash Card Slot
<b>Mini-PCle:</b>	Not Applicable
<b>Serial Ports – 4 External:</b>	<b>COM1, COM2, COM3</b> = DB9M With Pin 9 Voltage (0V/+5V/+12V) Selectable By BIOS / <b>COM4</b> = RJ45 Pin 1 Voltage (0V/+5V/+12V) Selectable By Jumper
<b>1 Internal:</b>	<b>COM6</b> For Primary Touchscreen
<b>Parallel Port:</b>	One DB25F
<b>USB Ports:</b>	6 V2.0 (2 Left Side / 4 Rear)
<b>Cash Drawer Port:</b>	RJ11, 12V DC or 24V DC Selectable By Switch (Maximum 2 Drawers – Supports Open/Close)
<b>Keyboard / Mouse Port:</b>	1 Each PS/2
<b>LAN Port:</b>	RJ45 10/100/1000 Base-T (Giga LAN) RealTek RTL8111DL
<b>VGA Port:</b>	One DB15F Display Port For Second LCD (Maximum Resolution 2048 x 1536)
<b>Audio Port:</b>	One Line-In / One Line-Out
<b>Mic Port:</b>	One Mic-In
<b>Power Supply:</b>	60W, 12V/5A External Power Adapter 100-240V 50-60Hz
<b>Current / Power Usage:</b>	0.37A / 45W
<b>Operating Temperature:</b>	32° F to 95° F (0° C to 35° C)
<b>Dimensions – Base:</b>	11"W x 7-3/8"H x 8-5/8"D
<b>Overall:</b>	13-13/16"W x 12-1/8"H x 8-5/8"D
<b>Shipping Carton:</b>	20-1/4"W x 13"H x 16"D
<b>Weight – Product:</b>	12.9 lbs.
<b>Shipping:</b>	17.5 lbs.
<b>Safety and EMI:</b>	FCC, RoHS



All product and company names are trademarks, service marks or registered trademarks of their respective owners. All features and specifications are subject to change without notice.

© 2013, Printed in U.S.A.

Lit-213c

