

# TEC



## MA-1595

High Quality LAN ECR



# Built-in LAN Communications

## Standard Scanning Interface

- Mix and Match
- Hi-cone
- Source code and in-store code
- Price read key
- Add PLU function
- Up to 65,000 items

## Standard EFT Interface

- Credit Card Authorization
- Debit Card Authorization with "PIN" pad
- ECR printer is used for voucher print (U.S. only)
- EBT Food Stamps
- EBT Cash
- Check Verification (MICR/Driver's License)



## Standard Scale Interface

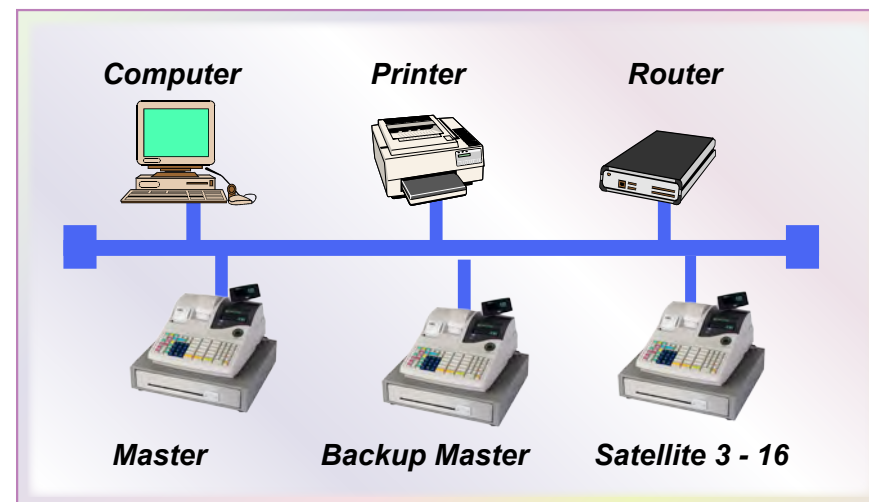
- Scale status for department and PLU
- Tare Table Programming
- Manual scale entry

## Cashier Accountability

- Cashier name up to 12 characters
- Flexible cashier number entry
- 15 cashiers standard (99 maximum)
- Training mode
- Drawer assignment for each cashier (up to 2)
- Full Accountability report
- Floating Cashier

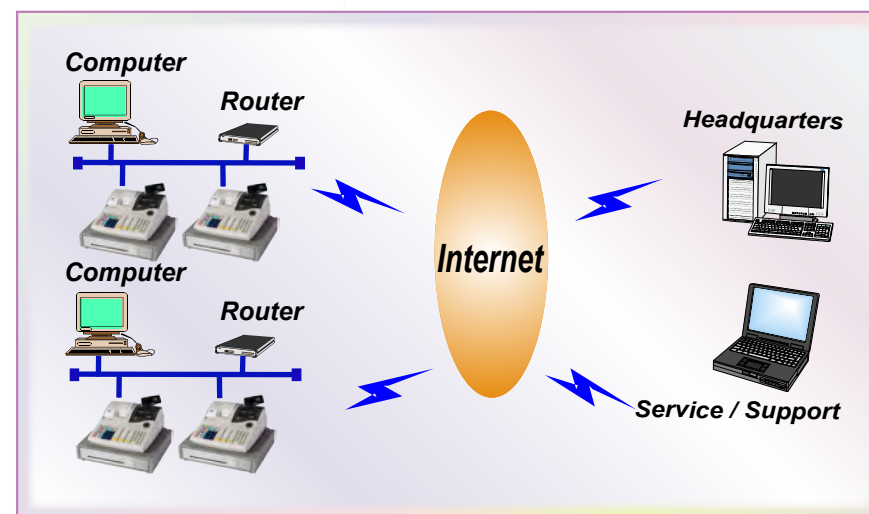
## High-Speed LAN Communications (Standard)

- PC connection via LAN (TCP/IP)
- Master/backup master configuration
- Up to 16 terminals



## Internet Communications

- Communicate seamlessly to a main office through the internet



## **ymphony™ Back Office Software**

- Full inventory control
- File maintenance
- Reporting
- Multi-store hosting

## High Quality Thermal Printer

- 58mm paper width
- 20 line/second print speed
- Silent thermal (receipt/journal)
- Journal condense print option
- Clam shell design for easy paper loading (Drop 'n Load)
- Automatic receipt cut
- Graphic logo print function



## Front Display

- 16 character dot-matrix
- Alpha-numeric
- 10 digit, 7 segment
- Scrolling message up to 64 characters

## Customer Display

- 10 digit, 7 segment
- Swivel



## User-friendly Keyboard

- 90 key raised keyboard or 120 key full flat keyboard
- External PLU keyboard (PK-2) available
- Fully programmable keyboard



## Financial Report

| TEC                             |       |
|---------------------------------|-------|
| MA-100 Electronic Cash Register |       |
| 03-01-2004 MON 10               |       |
| X FINANCIAL                     |       |
| GT                              | 86.00 |
| NET GT                          | 52.90 |
| IGS                             | 30    |
| NS                              | 86.00 |
| NS                              | 52.90 |
| NS                              | 33    |
| TOTAL                           | 52.90 |
| CASH                            | 52.90 |
| CHECK                           | 35.90 |
| CW                              | 11.00 |
| CW                              | 100   |
| CREDIT 1                        | 3.00  |
| CASH 10                         | 5.00  |
| CASH 10                         | 35.90 |
| CW 10                           | 11.00 |
| CRT 101                         | 1     |
| ALL 10                          | 3.00  |
| +                               | 2.00  |
| DISC                            | 0.10  |
| RIN                             | 1.00  |
| -SALE                           | 10.00 |
| NO /OUS                         | 100   |
| NO SALE                         | 3.67  |
| HOLD CTR                        | 5.88  |
|                                 | 1     |
|                                 | 2     |
| 0031 10:25PM                    |       |

## Cash Drawer

- Sturdy metal construction
- Stainless steel front with media slot
- Manual release lock
- Five bill / five coin compartments

## Feature Rich (Standard)

- Three RS-232 ports
- Cancel transaction key w/50 item buffers
- Four tax rates
- Ten media keys for tender
- Triple multiplication for item entry
- Ten auto-function keys
- Two percentage discounts
- Two selective itemizers
- Other income department (hash)
- Sales % of department
- Salespersons change during a transaction
- Customer charge file
- Link PLU
- Media pick-up warning
- Drawer open warning time setting
- Forced birthday verification
- Coupon entry
- Post receipt
- Hold and Recall
- Negative check file
- Data capture
- Bottle deposit
- Compulsory validation by department and media via slip printer

## Peripherals

- Secondary drawer
- PK-2 external PLU keyboard
- Slip printer
- Scale
- Scanner
- EFT Terminal

## Options

- 4M Memory Board

| Management Report                  |                | X | Z | GTX | GTZ |
|------------------------------------|----------------|---|---|-----|-----|
| Combination report                 |                | * | * |     |     |
| Financial report                   |                | * | * | *   | *   |
| Cashier report                     | All            | * | * | *   | *   |
|                                    | Individual     | * | * | *   | *   |
| Sales person report                |                | * | * |     |     |
| Credit card sales report           |                | * | * |     |     |
| Department report                  | Gross Profit   | * | - | *   | *   |
|                                    | All            | * | * |     |     |
|                                    | Individual     | * | - | *   | *   |
| Group Report                       |                | * | - |     |     |
| Media sales & in-drawer total      |                | * | - |     |     |
| Hourly report                      |                | * | * |     |     |
| All media sales & in-drawer total  |                | * | - |     |     |
| PLU                                | All            | * | * | *   | *   |
|                                    | Zone           | * | * | *   | *   |
|                                    | Individual     | * | - | *   | *   |
| Customer (check track) file report | All            | * | - | *   | *   |
|                                    | Individual     | * | - | *   | *   |
|                                    | Non-active     | * | - | *   | *   |
|                                    | Debit balance  | * | - | *   | *   |
|                                    | Credit balance | * | - | *   | *   |
| PLU group report                   | Zone           | * | - | -   | -   |
|                                    |                | * | - | -   | -   |

## RAM Allocation

|                         | Standard RAM | With Extended Memory (MAX) |
|-------------------------|--------------|----------------------------|
| PLU (Local)             | 1,500        | -                          |
| PLU (Central)           | 5,000        | 65,000                     |
| Cashier (Local)         | 15           | -                          |
| Cashier (Central)       | -            | 99                         |
| Customer File (Local)   | 1,000        | -                          |
| Customer File (Central) | -            | 3,000                      |
| Data capture            | -            | 65,000                     |
| Departments             | 99           | -                          |
| Department major groups | 10           | -                          |
| Department groups       | 30           | -                          |
| PLU groups              | 99           | -                          |
| Negative Check File     | -            | 3,000                      |
| Salespersons            | 99           | -                          |
| Hourly ranges           | 24           | -                          |
| Media                   | 10           | -                          |

## Specifications

Dimensions - 410 mm width X 430 mm depth X 346 mm height  
 Weight - 14.0 kg  
 Power required - AC 117V + 10%; 50/60 Hz  
 Power Consumed - 0.6 A @ 117V  
 Ambient Temperature- 0 degrees C to 40 degrees C, 10% to 90% relative humidity  
 Size of Receipt and Journal Tape - 58 mm width X max. 80 mm diameter

*All company and/or product names are trademarks and/or registered trademarks of their respective owners. All features and specifications described in this brochure are subject to change without notice.*

## TOSHIBA

### TOSHIBA TEC AMERICA

4401-A Bankers Circle  
 Atlanta, GA 30360  
 U.S.A.  
 Phone: 770-449-3040  
 Fax: 770-449-1152  
 Website: www.toshibatecusa.com

### TOSHIBA TEC CANADA

370 Britannia Road East, Units 1 & 2  
 Mississauga, Ontario L4Z 1X9  
 Canada  
 Phone: 905-890-8283  
 Fax: 905-890-0082  
 Website: www.toshibateccanada.com