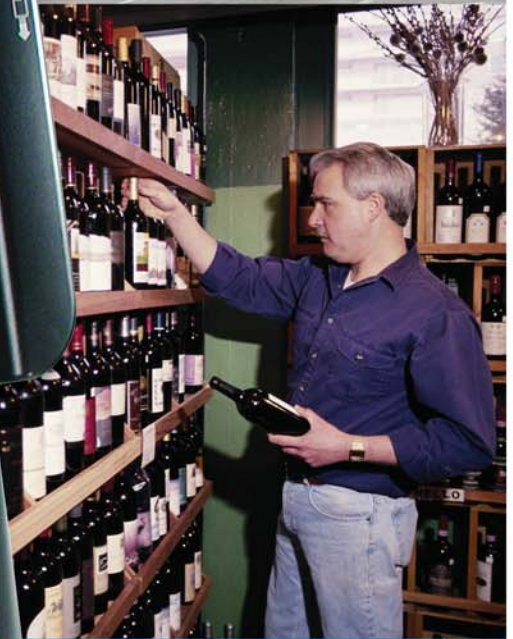


# SAM4S

## SPS-2000

Touch Screen ECR For Retailers



- Touch Screen Simplicity
- Fanless
- UPC Scanning
- Electronic Cash Register (ECR) Design Advantages
- Optional Back Office Inventory Software

# SAM4S

# Designed For Reliability

Choose the POS system that runs on an advanced ECR platform for an efficient reliable solution.

## ECRs Are More Secure

The SAM4s SPS-2000 includes flexible, built-in point-of-sale software. Because it isn't a PC, the SPS-2000 won't require operating systems upgrades, doesn't need network administration support, and your information won't be compromised.

## ECRs Are More Reliable

The SAM4s SPS-2000 is a retail hardened electronic cash register (ECR) built to function in the harshest environments. It is compact and space efficient with cables and connections secure from customer interference.

## ECRs Provide Lower Total Cost of Ownership

The SAM4s SPS-2000 can be setup and installed at a lower cost and in significantly less time.

## ECRs Last Longer

ECR Systems typically last seven to ten years while on average, PC-based systems typically require replacement every three to five years.



View Vivid colors with the super-bright 12.1" TFT LCD touch screen.

Receipts, shown 50% actual size, printed by the optional SAM4s Ellix 20 high-speed thermal printer.

## Popular POS Components Included – Not Added On

Each SPS-2000 includes a magnetic card reader and a rear customer display. These essential components are significantly more expensive when added on to a bare-bones terminal.



### Rear Display

The rear display allows consumers to monitor prices as items are entered and view the sale total.



### Magnetic Card Reader

Use to swipe payment cards when integrated payment options are implemented, or to log or clock in employees.



### Easy Save/Load

Store programs or collect reports with the SD memory card port or USB port.



### Easy to Access Ports

Connect to a wide array of compatible off-the-shelf POS peripherals with six serial ports and two USB ports.

# A Simple, Yet Effective Solution For Retailers

- Accurate Pricing
- Fast Checkout
- Customer Satisfaction
- Reduces Shrink
- Easy to Implement
- Cost Effective



## Bar Code Scanning

Enjoy the advantages of scanning – price control, item movement reporting and labor savings – by adding an inexpensive laser scanner. With its high capacity PLU file (20,000+ items are possible) the SPS-2000 is ideal for liquor, tobacco, dollar store and specialty food retailers. Here are some examples of the benefits of scanning:

- You won't have to rely on clerks to remember or look up item prices. Accurate, consistent pricing results in better customer service and improved margins.
- Check out time is reduced – increasing customer satisfaction and loyalty.
- Re-price shelves, not items. Labor costs to mark and change item prices are greatly reduced.
- Item movement reports identify successful promotions, slow moving items and help increase turns.
- Standard inter-register communications (IRC) provides consolidated reports and system-wide programming.
- Includes Price Inquiry, Age Verification, Clerk Timekeeping and Electronic Sales Journal.

## Not Found PLU (Price Look-Up)

If the "Not Found PLU" message displays when a PLU item is entered (or when an item is scanned) the operator will be prompted to enter PLU price, descriptor and linking information. The item is registered immediately and the PLU file is updated.

## Price Embedded Barcodes

For delicatessen, meat and produce applications where a POS scale is integrated, the SPS-2000 recognizes "price-embedded" barcodes, extends the weight and applies the appropriate price.

## Mix and Match Discounts

Where discounts are based upon multiple item purchases, for example "save \$5 on any three bottles of wine", the SPS-2000 will apply the appropriate discount automatically when the discount requirement is satisfied.

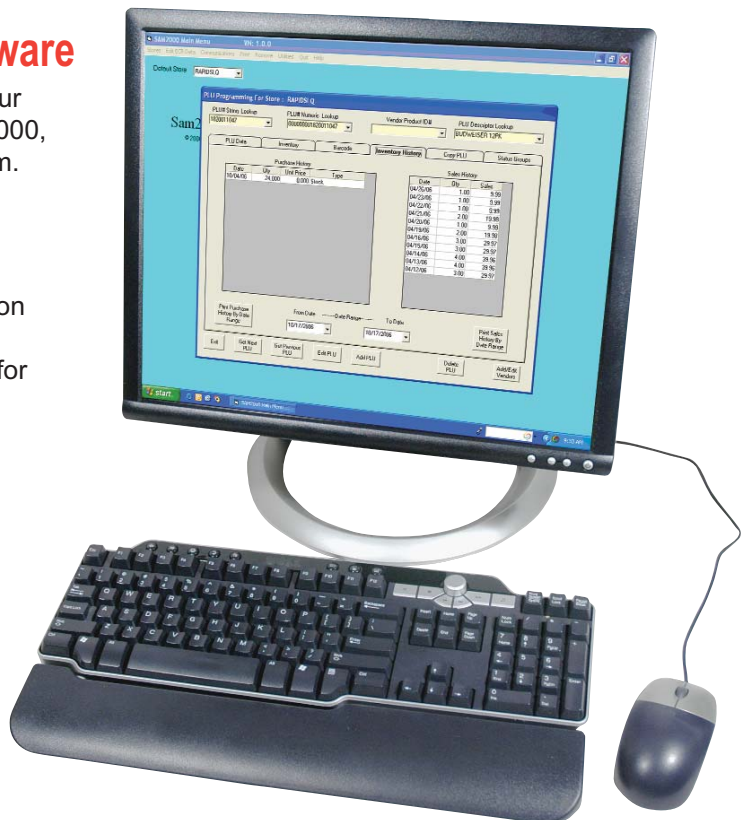
## Optional Polling and Inventory Software

For enhanced sales and inventory processing, poll your SAM4s ECRs from a local or remote PC using SAM2000, the companion PC program for your SPS-2000 system.

- Poll and consolidate multiple stores.
- Print barcode item or shelf labels.
- View sales and purchase history for each item.
- Calculate margin/profit, average unit cost, and cost on hand. Reports gross profit by item categories.
- Maintain your PLU database with easy-to-use tools for adding and editing items.



SAM2000 accepts inventory receipts and inventory updates from popular handheld portable data terminals.



**SAM4s**

# SAM4s SPS-2000 Touch Screen ECR For Retailers



## Insure Speed, Security and Efficiency with Integrated Credit, Debit and Gift Card Payments

Both cash and electronic payment sales can be processed in a single step at the SAM4s SPS-2000 with an optional DataTran™ integrated payment terminal.

- The SPS-2000 is electronic payment and gift card processing ready – no additional software modules are required.
- Free gift card processing is available through selected processing partners.
- Fast 2-Second IP Processing can be completed using an IPTran™ terminal or PC equipped with IPEnabler® software and a persistent Internet connection.

## Standard Network Support

Up to 32 terminals can be connected in a fast and reliable Ethernet-style network. Networking supports report data consolidation, terminal programming, payment authorizations, printer and video requisition routing.

## Time and Attendance

A fully featured time and attendance system provides payroll ready data for your in-house payroll system or payroll service. Built-into your POS system, you get critical labor reporting, including sales/labor percentage and sales per man-hour. Information is easily accessible by store managers for real time staff management.

| TOP 20 PLUS REPORT<br>CONSOLIDATED (01) |                     |       |            |
|---|---------------------|-------|------------|
| X1 REPORT                               |                     |       |            |
| SORTED BY COUNT                         |                     |       |            |
| ITEM                                    | GROUP#              | COUNT | PLU# TOTAL |
| MARLBORO RED BX                         | 0000000000000288012 |       | 19.77%     |
| #57/#00/#00                             | 21                  |       | \$97.23    |
| BUDWEISER 6PK                           | 000000000000180162  |       | 21.75%     |
| #03/#01/#00                             | 17                  |       | \$106.93   |
| SEAGRAM'S 7 - 750ML                     | 000000000000873380  |       | 38.00%     |
| #29/#20/#00                             | 17                  |       | \$186.83   |
| SHIRNOFF 80P 50ML                       | 000000000000824720  |       | 4.84%      |
| #25/#20/#00                             | 16                  |       | \$23.84    |
| DIET PEPSI 2L                           | 000000000000122310  |       | 4.45%      |
| #52/#50/#00                             | 11                  |       | \$21.89    |

## System Reports

Over sixty system reports are available for financial and sales analysis. Reports can be viewed on the ECR screen, printed at a local printer, or polled remotely. Sales information can be simultaneously collected on up to five different levels: for daily, weekly, monthly, quarterly or yearly record keeping.

## Hardware Specifications

|                            |                    |  |
|----------------------------|--------------------|--|
| <b>Display –</b>           | <b>Front:</b>      | 12.1" Touch Panel TFT-LCD                                  |
|                            | <b>Adjustable:</b> | 22° ~ 77°  |
| <b>Interface –</b>         | <b>Rear:</b>       | 1 Line, 10 Digit Numeric VFD                               |
|                            | <b>Serial:</b>     | 6 Ports (COM 1, 3, 4 Supplies +5V; COM 6 Supplies +12V)    |
|                            | <b>Parallel:</b>   | 1 Port   |
|                            | <b>LAN:</b>        | 1 Port (10 Base – T Ethernet)                              |
|                            | <b>USB:</b>        | 2 Ports (Version 1.1)                                      |
|                            | <b>Drawer:</b>     | 1 Port (12V) – Supports 2 Drawers                          |
|                            | <b>PS/2:</b>       | 2 Ports (Keyboard/Mouse)                                   |
| <b>Dimensions:</b>         |                    | 14.9" W x 9.5" L x 6.1" H<br>(378mm W x 242mm L x 155mm H) |
| <b>Shipping Weight:</b>    |                    | 11 lbs. (5.0 kg)   |
| <b>Power Requirements:</b> |                    | 120V AC, 60 Hz   |
| <b>Operating Temp.:</b>    |                    | 0° ~ 100° F (-18° ~ 38° C)                                 |
| <b>Humidity Range:</b>     |                    | 30% ~ 80% RH   |
| <b>EMC (EMI+EMS):</b>      |                    | CE, FCC  |
| <b>Safety:</b>             |                    | UL/CSA   |



All product features are subject to change without notice.



Dealer Line Products Division  
www.crs-usa.com