

The Most “Complete” POS Printer available today!



Often when you buy a printer, you may also need to purchase extra cables or upgrades to software. This can obviously be incredibly frustrating if you've just purchased a printer only to find you need to go back to the shop to get another kind

of cable. With the TSP100 *futurePRNT*, you're ready to go. That's because literally everything you could possibly need is included in the box at purchase – power and interface cables, wall or vertical mount kit, 58mm paper guide as well as an installation software CD with value added software.



- 1 Start-up Paper Roll (standard 80mm)**
- 2 USB, PoweredUSB or Ethernet Interface Cable (depending on printer version)**
– the TSP100 *futurePRNT* features a full speed USB, PoweredUSB or Ethernet interface with a serial port emulator which means that legacy POS software written for serial connection only, can work with this printer through the USB or Ethernet interface.
- 3 Universal Power Cord (1.8m)**
- 4 Wall Mount and Vertical Operation Kits**
– with automatic receipt reversal software for user comfort
- 5 Start-Up CD-ROM**
– with Value Added Software and Drivers for majority of operating platforms including: Java-POS™, OPOS™, Apple MAC™ and Windows™ with Microsoft certification (WHQL)
- 6 Power Switch Cover**
- 7 58mm Paper Guide**

EVERYTHING YOU'LL NEED IN ONE BOX!

Low cost, high quality thermal receipt printers with everything you need included in the box.

- Sophisticated, high performance thermal receipt printer with tear bar or autocutter (guillotine)
- The most “complete” POS printer available today with all accessories included with the printer:
 - ★ USB, PoweredUSB or Ethernet interface cable
 - ★ Internal power supply with 1.8m power cord
 - ★ Start-Up CD-ROM with drivers for majority of operating platforms including Java-POS™, OPOS™, Apple MAC™ and Windows™ with Microsoft certification (WHQL)
 - ★ Wall mount and vertical operation kits with automatic receipt reversal software for user comfort
 - ★ Power switch cover
 - ★ 58mm paper guide
 - ★ Value-Added Software for Retailers:
 - ★ Receipt Re-design Tool including font replacement (early 2006), cropping and logo / picture placement tools
 - ★ Coupon Marketing Tool
 - ★ Unlimited Image Import Tool
 - ★ Electronic Journal facility
 - ★ Automatic 2nd Copy feature for security or administration purposes

All available to work alongside your original POS software

 - ★ Value-Added Software for OEMs, System Builders, Software Developers:
 - ★ Free Customer Software Tools
 - ★ Dedicated Software Developers Kit (SDK)
 - ★ Selectable Pre-view Tool
- Full Speed USB interface with selectable serial port emulation
- Space saving vertical or horizontal operation from the box
- New Star “Intuitive” Compatibility for Microsoft applications, including JavaPOS™ & OPOS™
- All printer features available from the printer’s properties page in Windows™



Star Micronics America, Inc.
 1150 King Georges Post Road
 Edison, NJ 08837-3729
 Tel: 800-782-7636 x107
 Fax: 732-623-5590
 Email: sales@starmicronics.com
 www.StarMicronics.com

TSP100 SERIES SPECIFICATIONS



Printer Method	Direct Thermal Line Printing
Receipt Per Minute Throughput Speed	See page 2
Printer Case Colour	Star white or Charcoal grey. Other colours available for large volume orders
Print Resolution	203 dpi (8 dots per mm)
2 Colour Print Capability	Red / Black, Blue / Black, Green / Black (special paper required)
Number of Columns	48 / 64 or 53 / 71 dependant on print width
Character Set	ANK 95, 32 Int 128 Graphic plus Chinese, Japanese, Korean, Taiwanese
International Code Pages	Star Mode = 40. ESC/POS™ = 10 + 1 blank allowing an additional character page to be added
Barcodes	Extended barcode functionality – 9 versions / PDF417 & Maxicode (pending)
Line Spacing	3mm or 4mm + programmable
Paper Specifications:	
Width	80mm Standard, 58 mm with guide fitted
Thickness/Weight	0.065mm ~ 0.085mm / 65 ~ 85gsm
Roll Diameter	up to 83mm
Easy-Load	“Drop-In & Print”
Paper Out Sensor	Standard
Maximum Print Width	80mm paper = 72mm, 58mm paper = 50.8mm
Top Margin	11 mm
Autocutter	Guillotine (Partial Cut Only)
Logo Store Capacity	Unlimited
Drivers Available	Windows™, Mac OSX (10.2 or later), Linux CUPS Support™, OPOS™, JavaPOS™, POS for .NET
Interface / Port	USB 2.0, Full Speed, or PoweredUSB Full Speed or Ethernet; Virtual Serial Port for Legacy Applications
Emulation	Star Mode, ESC/POS™ (December 2005)
Peripheral Drive Circuit	2 circuits (24V max.1A) 1 Compulsion input
Power Consumption	Average 1.6 Amp. Printing, 0.1 Amp. Standby.
Power Supply	Internal with power cable supplied
Operating Conditions:	
Temperature	5°C to 45° C
Humidity	10% to 90% RH (Without Condensation)
Storage Conditions:	
Temperature	-20°C to 60°C
Humidity	10% to 90% RH (Without Condensation)
Dimensions	142mm (W) x 204mm (D) x 132mm (H)
Weight:	
Auto Cutter Model	1.73Kg
Tear Bar Model	1.56Kg
Safety Standards	UL, C-UL, TÜV, FCC, VCCI, EN55022, CE, CB
Reliability:	
MCBF	60 Million Lines
Print head	100km
Cutter (Guillotine)	1 Million Cuts
Accessories / Options	No options available as <i>ALL</i> accessories included with printer. Wall Mount Bracket, Auto-Reverse Text Output Software, Vertical Mount Accessory, 58mm Paper Guide, 1.8m Interface Cable, 1.8m Power Cable, Power Switch Cover, Installation CD and Value-Added Software

All specifications are subject to change without notice.

September 2005



www.futurePRNT.com

TSP100 ✦
futurePRINT

star ✦

The Lowest Cost, High Quality POS Printer
THE TSP100 SERIES



Welcome to the next generation in POS print thermal receipt printer available today - with

Star Performance - Print Speed vs Throughput

Over the last three years Star Micronics has introduced a variety of new products with such advanced processing power that the old fashioned method of measuring print speed has been made redundant.

Simply measuring how fast the head will print one isolated mm of output does not take into account the total investment

that has been put into the overall "build". Normally we would not directly target a competitor's product, but Star feels it is necessary to show that a new method of measuring output speed is now required.

Just look at the TSP600 (launched 2001) results below when printing the same receipt.

Star Performance - Receipts Per Minute



Star Micronics will therefore be using the new standard in print speed measurement called RPM.

This will measure the actual time taken to produce an entire receipt from the moment it is requested by the software to when it is produced

- all in a laboratory controlled environment. Star's latest product, TSP100 *futurePRNT*, is testament to the vast difference in throughput speed when using the very latest in

printer technology. Just look at the results in the table below. Users are no longer limited to using old fashioned, unexciting resident fonts on their receipts.

The TSP100 *futurePRNT* is capable of producing the same number of receipts per minute using modern TrueType fonts instead.



Typical example of receipt with Resident Fonts



Typical example of receipt with TrueType fonts and Graphics

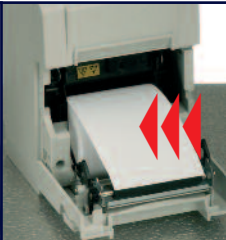
Receipts Per Minute				
Model USB I/F	Driver Version	Print Speed (mm / sec.)	Graphic with TrueType Font	Resident Font
Star TSP100 <i>futurePRNT</i>	V.1.0	125	22	22
Epson TM-T88III™	V.5.0.3.0	150	7	25
Star TSP600	Raster: 20050520 Line: 20050628	150	30	30
Star TSP700	Raster: 20050520 Line: 20050628	250	45	45

Results obtained printing 80mm wide x 150mm long receipt with Microsoft Windows XP on PC with CPU 2.3 GHz and 512 MB RAM

ers. The TSP100 is the lowest cost, high quality ALL accessories and software included.



"Drop-In & Print", easy paper loading in either the standard horizontal or space saving vertical position



Robust, high speed guillotine cutter for increased reliability



Two-colour output with running costs comparable with other POS technologies



Wall mount bracket automatically included with printer at purchase



Full Speed USB interface with selectable serial port emulation



Easy Set-up with or without the Printer

All the TSP100's printer features are available from the printer properties page in Windows, including unique features such as Auto-Text Reversal™ for wall mounted or vertical operation. Simply tick the box and all output will be automatically turned upside down for user comfort. All settings can be stored on the PC and "mirrored" across other TSP100 printers with a simple export configuration feature for mass system installations. *No hardware configuration is needed at all.*



Auto-Text Reversal™



JAVAPOS™

OPOS



"Instinctive" compatibility with majority of POS operating platforms, with quality suite of drivers



The TSP100 Receipt Re-Design Tool



This revolutionary new tool has been designed to work completely independently from your current POS software and will allow any user to literally re-design their receipts without changing their software.

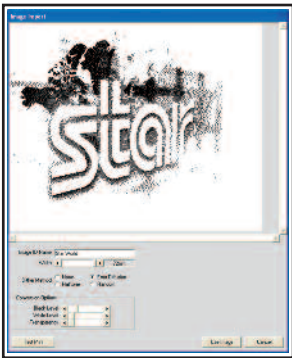
Legacy software can have embedded text and graphics which you may have always wanted to change. Now you can, with the new **RECEIPT CROPPING TOOL** which will crop unwanted sections, thus creating space for new graphics and text. The unique Star Selectable **PRE-VIEW TOOL** will make this task even easier. Perhaps the most important element will be the **FONT REPLACEMENT TOOL** (available early 2006) making the printer's resident fonts no longer relevant. This, along with the other tools mentioned, will be available from the printer's properties page and, when selected, will replace any non TrueType fonts featured on the receipt with a more attractive / effective font – all without affecting the speed of the printer.



Literally re-design your receipt without changing your software or becoming an IT expert. Crop out embedded text and images, add new profit-making messages and graphics.

Coupon Marketing Tool with the TSP100

Star's revolutionary new printer has taken customer motivation to new heights with this free-of-charge value-added software, which will work alongside your current system. The new Coupon Marketing Tool from Star will enable the automatic printing of coupons based on the retailer's pre-decided products or purchase values relevant to that transaction.



Seasonal fluctuations, overstock situations can all be addressed by the retailer determining certain "trigger action" key words. Unlike AutoLogo on The TSP700, the simple wizard-driven software will "word-search" all receipts to ascertain the automatic output of relevant coupons or graphics.

The new **IMAGE IMPORT TOOL** simplifies the usual logo store set-up by eliminating the need for

the usual image preparation work. An unlimited number of mono or colour jpgs, gifs and bmps can be accessed by the control panel, saved by name and even prepared for output with a choice of dither methods. There is no longer any need to pre-size or pre-save an image file as a mono bmp, as was so often required by other POS printers. The TSP100's unique installation set-up facility will allow PCs to be pre-installed (not necessarily with the printer connected) for multiple printer use across the whole store.

The new **PRE-VIEW TOOL** provides retailers and system builders with the ability to pre-check the overall appearance of planned receipts by using the pre-view tool during set-up. This simple tool, again a rare facility in the POS world, will save much time.



Star TSP100 System Builder Tools



Star has produced a dedicated **SDK** (Modular Software Developers Kit) with a wide range of tools available, allowing the system designer to take advantage of all the TSP100's software and hardware features e.g auto text reversal for vertical / wall mounted use. This feature can literally be dragged and dropped into the developer's software.

PRE-INSTALLATION SET-UP TOOL – with Easy driver installation for all major platforms with CD-ROM supplied or using

the Star designed architecture for fast modifications when needed. Custom filters / features can be easily written by the Integrator or OEM or in conjunction with our UK software engineers. The unique Printer Serial Number Identifier will also be ideal for remote polling for hardware audits, warranty / servicing issues etc.

"DRAG & DROP" SOFTWARE FEATURE TOOL
Active X Components for Star Printer Feature Inclusion into OEM Software.