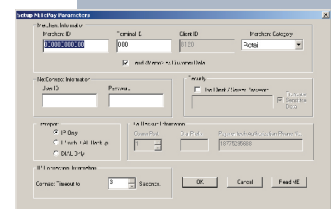
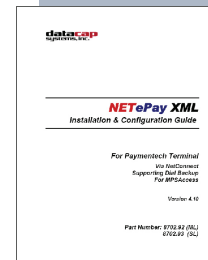


NETePay adds high speed electronic payments to any PC-based business system. Using standard Internet or other TCP/IP virtual private network service, payments are authorized in as little as 2 seconds. Also, automatic fail-over to dial back-up is available by adding Datacap's fast-connect modem, DialLink™.

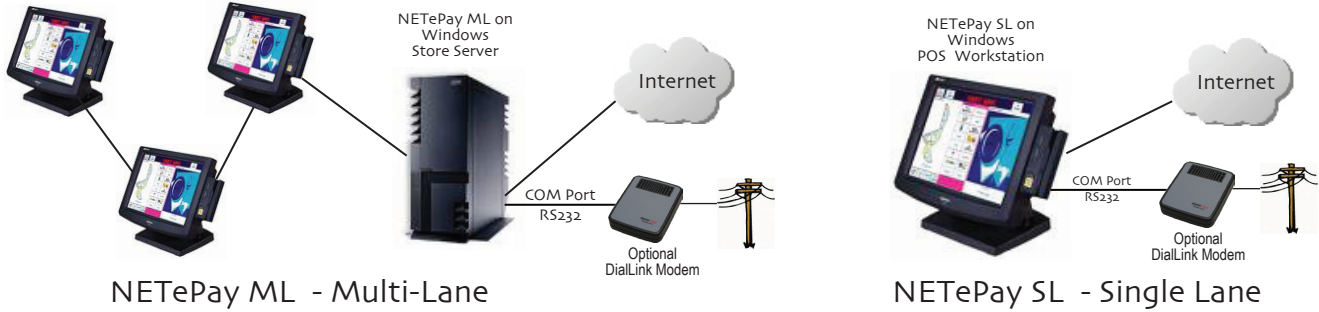
NETePay's client/server architecture is scalable to fit the needs of any size enterprise and is currently operating in businesses ranging from a single register to over a thousand stores. The NETePay client, DSIClientX™, is integrated to the POS application and sends encrypted multi-threaded transaction requests to NETePay server, which can be located at each store, a headquarters location or at a remote payment services operator location. Easily integrated with a single interface for all major processors, NETePay is relied on by hundreds of PC-based systems developers in various retail and food service segments to reliably and efficiently handle their payment requirements.

Flexible, Secure High Speed Payments for PC/POS Systems

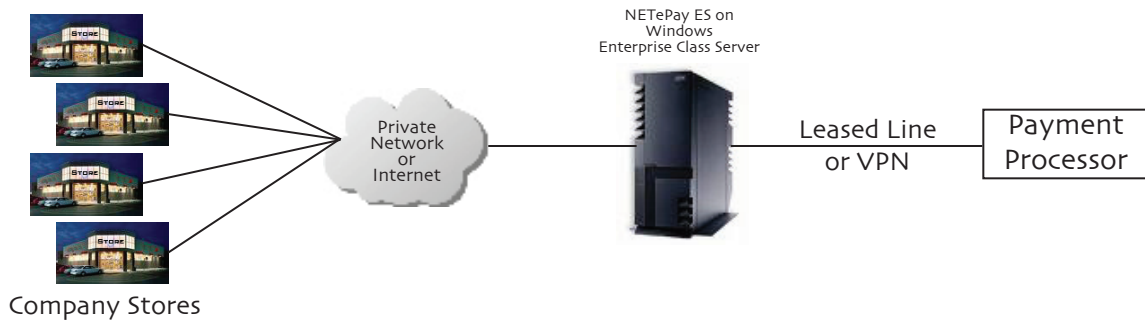
- Supports Credit card, Debit (including Canadian EMV and Interac), Checks, EBT, RFID/contactless, e-commerce, retail petroleum transactions and p-card (Sister package, GIFTePay™ provides gift and loyalty support)
- PA-DSS validated for secure processing, with encrypted communications between DSIClientX and NETePay, and between NETePay and the payment processor
- Single integration to our ActiveX control, DSIClientX, supports all major payment services and all system configurations – no need to deal with various banks or processors for separate integrations
- Controls are included for peripherals such as card readers, PIN pads and check readers
- Free DSIClientX control distribution streamlines installation and support – simply include it with every system
- Single-lane, multi-lane, and central enterprise configurations available
- Selected processors absorb NETePay license fees, eliminating the up-front cost of NETePay servers, SaaS applications are available
- Built-in database management, reporting and other administrative functions
- Support for Windows, NT/2000/XP/Vista/7
- Available with two 10-day demo periods via Internet download
- Automatic failover to alternate IP addresses/servers for increased reliability
- Back-up store server included with NETePay Store Server software
- Automatic dial back-up easily activated via a set-up screen parameter



NETEPAY STORE SYSTEMS CONFIGURATIONS



NETEPAY ENTERPRISE CONFIGURATION



NETEPAY REMOTE PAYMENT SERVICES PROVIDER CONFIGURATION

